

# هونه‌ر و کارامه‌یی کارکردن له رادیۆ و ته‌له‌فزیۆندا



عه‌لی عه‌بدووهره‌حمان

وه‌رگیڕانی  
کاروان محهمهد









2014



) (

7.....	-
9.....	-
13.....	-
19.....	-
23.....	-
29.....	-
39.....	-
45.....	-
51.....	-
57.....	-
121.....	-
129.....	-
137.....	-
141.....	-
145.....	-
149.....	-
159.....	-
167.....	-

) 1990 ...  
(



!

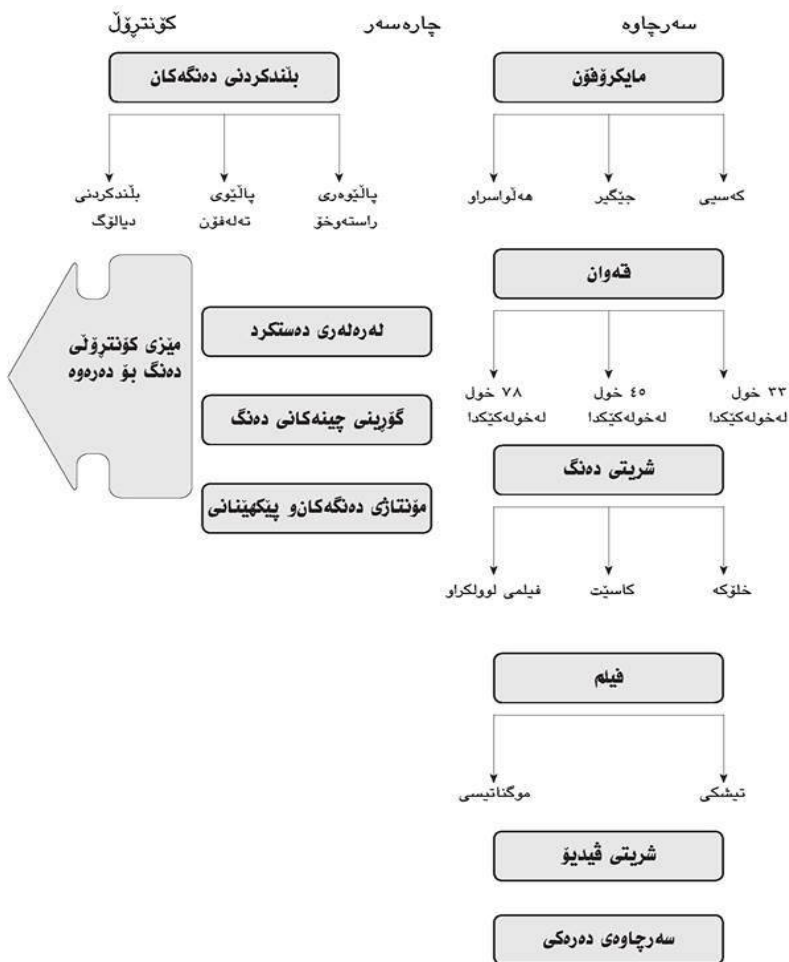
2010



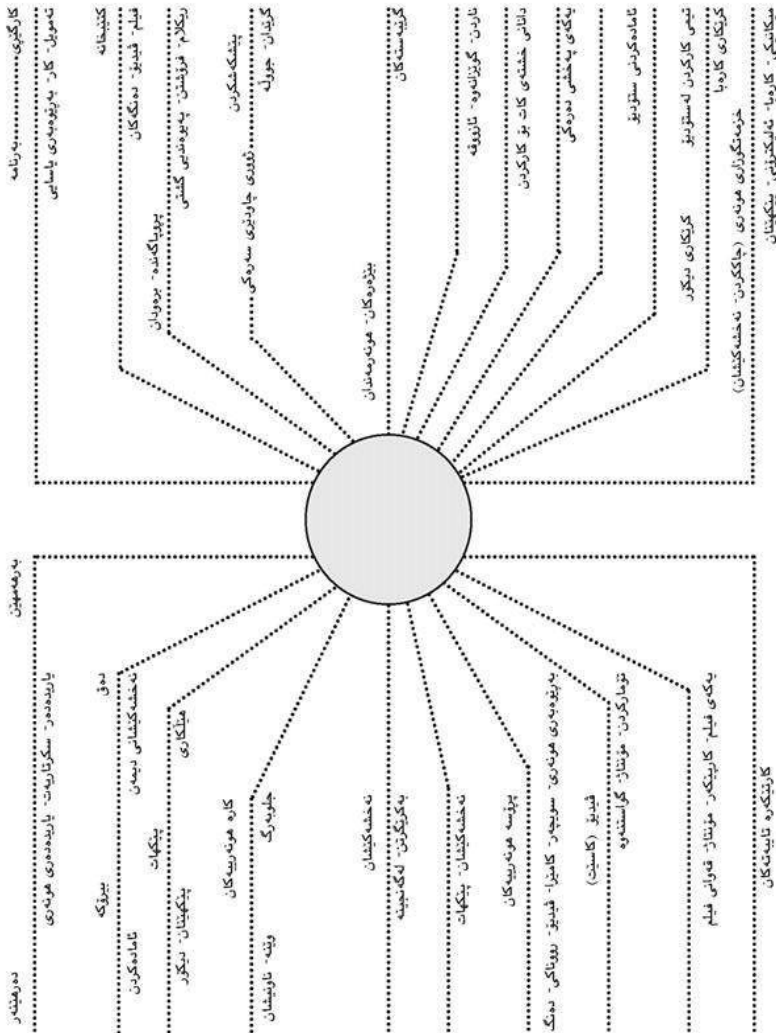
.) (	-	1
		2

) (	) (		
-	-		1
-	-		2

## سەرچاوە ھاوبەشەکان لەبەرھەمەینانی دەنگدا



# كۆمەللىك خزمەتگوزارىي ھاوبەش لەبەرھەمھەيئەتنى تەلەفزيۇنىدا





		1
		2
		3
		4

<p style="text-align: right;">-</p>		
<p>       :        .        .) ....        )        .        .        .     </p>		5



-		1
- - -		2
-		3
-		4
-		5
-		6

-		7
( ) -		8
-		9
-		10
-		11
-		12

) ( -	.) (	13

(3)

- . - - - .	. . . . .	- - - - .	1
- - ( .)	. . . .	- - - .	2

-	-	-	3
-	-	-	4
-	-	-	5
-	.) (	-	- 6
	( .)	-	
	( .)	-	
	( .)	-	

--	--	--	--

-	-		7
-	-		8
-	-		9
-	-		10



			1
			2
....			3



: ( .) . . .			4
- - .... -			5
10- 6			6

30 -	-:	-	7
		-	

	-		
-	-		8
-	-		9
-	-		10
-	-		11



- :

:

		1
		2
		3
	) (	4
		5
		6
		7

).. (		8
		9
		10
		11
		12
	.) (	13
		14

(5)

- : :


- : :

	-	-	1
	-	-	2









			5

	News - ) ( )1( - Report - )2( - News story - )3( - Comment - )4( - In Brief - )5( - News - )6( - Bar Programs - )7( -		6
		Talk show	7
			8

	-		
-	-		9
-	-		10
-	-		11

-	-		12
-	-		13
-	-		14
-	-		15
-	-		16

			17
	<p>:-</p> <p>: <b>Fill in</b> )1( -</p> <p>: <b>Sting</b> )2( -</p> <p>: <b>Promo</b> )3( -</p> <p>: <b>Traile</b> )4( -</p> <p>(</p> <p>: <b>Logo</b> )5( -</p>		18



(6)

- : :

-	-	1
-	-	2



: :  
- :

		1
		2
		3
		4

:  
-1  
-2  
-3  
-4  
-5  
-6  
-7  
-8  
-9  
-10

-:

)... .. (:

.. : .. .. -11

. -12

. -13

. -14

. -15

.... .. -16

. -17

. -18

. -19

. -20

. -21

. -22

. -23

:

- :

-		1
-		2
-	) (	3

- :

:

-		1
-		2
-		3
-		4
-		5
-		6
-		7
-		8
-		9

(7)

- : :

:

-	.	1
-	.	2
-	.	3
-	.	4

**Elementary Script**

-1

<b>Notes</b>	<b>Video</b>	<b>Audio</b>	<b>Items</b>

- : Items -
- : audio -
- : video -
- : notes -

**Shooting script** -

-2

<b>Notes</b>	<b>Shoot size</b>	<b>Video</b>	<b>Audio</b>	<b>Items</b>

:

Items -

audio -

video -

shoot size -

notes -

.)

(



TITLE	
s-	
Suitabi	(
SUBJ	
T.C	
T.T	t.c. in + t.c. out
Take	Take
Shoot	
Video	
Audio	
Items	...

	5	1
+  +        +  ...	...        ...  ...  ...	2
	5	3
+  +	...	4
	5	5
+        +  +  +		6

--	--	--

(8)

				1
Idea men		-		2
Situation		-		
Humors men		-		
Polish		-		
Full script	men	-		

<p style="text-align: right;">-</p> <p style="text-align: right;">-</p> <p style="text-align: right;">-</p> <p style="text-align: right;">-</p> <p style="text-align: right;">-</p>	<p style="text-align: center;">.) (</p>	<p style="text-align: center;">3</p>
<p style="text-align: right;">-</p> <p style="text-align: right;">-</p> <p style="text-align: right;">-</p> <p style="text-align: right;">-</p> <p style="text-align: right;">-</p> <p style="text-align: right;">-</p> <p style="text-align: right;">-</p> <p style="text-align: right;">-</p> <p style="text-align: right;">-</p> <p style="text-align: right;">-</p>		<p style="text-align: center;">4</p>
<p style="text-align: right;">-</p> <p style="text-align: right;">-</p> <p style="text-align: right;">-</p> <p style="text-align: right;">-</p> <p style="text-align: right;">-</p> <p style="text-align: right;">-</p>		<p style="text-align: center;">5</p>



<p style="text-align: right;">)6( ) ( )7(</p>		
<p style="text-align: right;">- - - - - - - - - -</p>		9
<p style="text-align: right;">= = .</p>		10





-		
-		
-		2
-		
-		
-		
-		
-		3
-		
-		
-		
-		4
-		
-		
-		5
-		
-		6
-		

(9)



- : -1

		1
Head	: <b>Built in</b> -1	2
Head	: <b>Built out</b> -2	

- : -2

	<b>Lens</b>	<b>Camera Head</b>	1
	zoom -		
	focus -		
	iris control -		
	<b>Camera tube</b>		2
	<b>View finder</b>		3
		<b>Camera body</b>	4
	<b>Tripod</b>	) (	5
	<b>Cables</b>		6
	<b>Battery</b>		7

- : - 3

-  
-  
-  
-  
-  
-

- : - 4

		-1
<b>Tripod</b>	-	-2
<b>Pedestal</b>	-	
<b>Crane</b>	-	
<b>Jimmy Jib</b>	-	

- : - 5

		1
		2
		3
		4

-6

		1
		2

-7

-:

)C.U.U )	) C.U.U )	-1
		-2
)View Finder)	)View Finder)	-3
		-4
) V.T.R. (	) V.T.R.(	-5

-:

-8

-1	
-2	
-3	
-4	

-:

-

<b>Zoom in</b>	-	1
<b>Zoom out</b>	-	
<b>Tilt Up</b>	-	2
<b>Tilt Down</b>	-	
<b>Pan Right</b>	-	
<b>Pan Left</b>	-	
<b>/Dolly In</b>	-	3
<b>Out</b>	-	
<b>/Right</b>	-	
<b>Track Left</b>	-	
<b>Pedestal</b>	-	4
<b>Crane</b>	-	
<b>Sharuoh</b>	-	

( . )		1
		2

<b>V.C.U.S</b>	<b>Very Close Up Shot</b>		1
<b>C.U.S</b>	<b>Close Up Shot</b>		2
<b>M.S.</b>	<b>Medium Shot</b>		3
<b>A.S.</b>	<b>American Shot</b>		4
<b>L.S</b>	<b>Long Shot</b>		5

<b>E.L.S.</b>	<b>Extreme Long Shot</b>		6
<b>P.S.</b>	<b>Panoramic Shot</b>		7
<b>E.S.</b>	<b>Establish Shot</b>		8

- : :

	<b>Troicar Shot</b>	1
	<b>Face Shot</b>	2
	<b>Profile Shot</b>	3
	<b>Over Shoulder Shot</b>	4
	<b>Free Hand Shot</b>	5
	<b>Stock /Library Shot</b>	6
	<b>Racing Shots</b>	7
	<b>Reaction Shot</b>	8
	<b>Running Shot</b>	9
	<b>Traveling Shot</b>	10
	<b>Insert Shot</b>	11
	<b>Still Cadre Shot</b>	12

- : - 01

--	--	--



		1
	Head Room	2
) (		3

-: -00

	<b>NORMAL ANGLE</b>		1
	<b>HIGH ANGLE</b>		2
	<b>LOW ANGLE</b>		3

-: -02

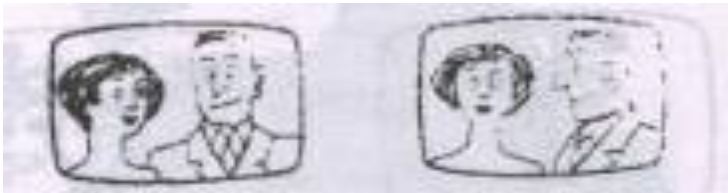
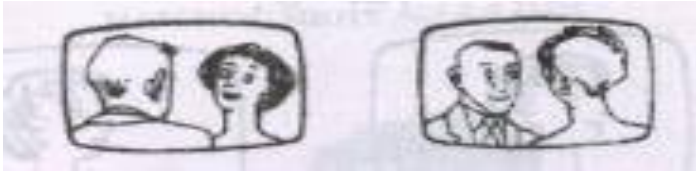
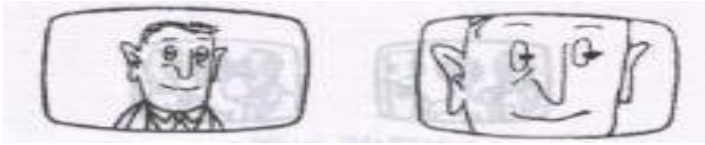
	Low End Studio Camera	1
	Middle Range Camera	2
	High Range Camera	3



High-precision engineered jib



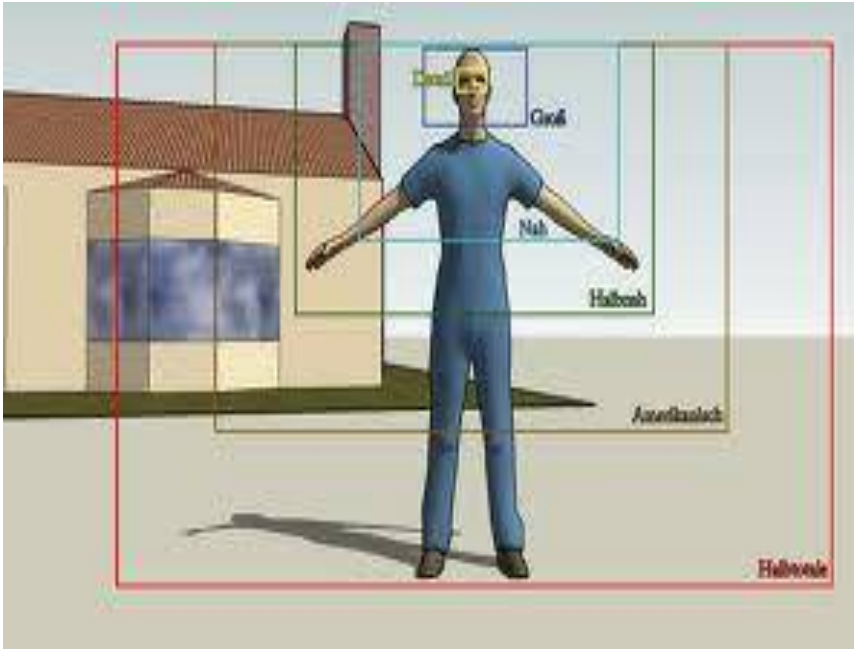




















**Pedestal**





-:

-0

		1
		2
		3
		4

		2

<b>Talk shows</b>	-	
<b>Round Table (Discussion)</b>	-	2
	-	3

- 2

<b>Blatouh</b>	<b>Control Room</b>
.Pasarel	.Switcher
	.Mixer
	.C.C.U
	.Monitors
	.T.B.
	.L.S.
	.S.S

Control Room -

	Switcher	1
) Mic)	Mixer	2
	C.C.U Camera control unit	3
	Monitors	4
)out(		5
-: -1	Talk back	6

. Ear piece -2 . Headphones ) ( -3 . Speaker video ( VTR -4 )tape room		
-; . Reel C.D	Source of Sound	7
)out(	.Speakers	8
) Manual( : ) fader)	Light System control	9

	.Pasarel	1
.Pedestal		2



) (	out	3
	"Auto Cue	Monitor
		Speaker
		4
		5
		6
		7

- :

:

- :

	Telecine Room	1
	Video Tape Room	2
	Master Control	3

	Room (M.C.R.)
--	------------------







-:

-:

-:

-0

-:

45	One Direction	1
	Two Direction	2
Round table discussion	Omi Direction	3

- : - 2

One audio channel	Mono	1
Two audio channel	Stereo	2
Four audio channel	Dolby	3

- :

- : - 3

Control room - - 1

<p>Tracks - 1</p> <p>Groups - 2</p> <p>Aux - 3</p> <p>4 ( ) 48 32 16 8</p>	Mixer	1
<p>Built in Powered )</p>		2

:)Up - Powered(		
	Record Machine	3
	Play Machine	4
Reel + Cassette + Dat. + C.D		5

: Platoh – -2

:

-: ...

	1
	2
	3
	4

Dead Room –	-3
	-1
	-2
V.H.S	-3
C.D	-4
DAT	-5
	-6













- : -0

- : -2

### (L.S) Lighting System

- : -


-: Spot - 3  
 -1  
 -2  
 -3  
 -4  
 -5  
 -6  
 -7  
 -8

.)  
 .)

- 4

-:


--	--

-:

800 650 250 ( )  
 ) ( ) ( )





÷ -1

÷ -2

( ) ..



÷

-3

-

-

-

-

-

:

÷

-4

-:

-1

-2

-3

-4

-5



-6  
-7

-5

-1  
-2  
-3  
-4  
-5  
-6  
-7

-8

-9



:

- :

- 0

.) .. ... (	.
: ) ) ( (	.

-:

-2

<p>-:</p> <p>-1</p> <p>-2</p>	
<p>)</p> <p>(</p>	



) (

÷ -1

) (

-:

2 1		1
3/4		2
1/2		3
1/4		4

: -2

D.V.D C.D( ) (

) (

) (

) DAT  
A.DAT

: -3

( V.H.S SUPER V.H.S V.8 (

: -4

)MINI D.V D.V.C (

60 30 20 5( : -5  
 ) 4 2( ) 120 90

: -6

-:

: :

: :

:

	<b>V.T.</b>	1
		2
		3
		4



	.) (	5
--	------	---

: -7

-: : -1

) 2007 / 30 100(

: -2

.) 120 90 30 20(

/ / -3

.) 30 /100(

: -8



-0

-1 -2 -3	

	-1
	-2
	-3
	-4

-:

-2

	-1 -2	1
: Assemble - ( ) : Insert - ( ) : Split -	-: -1 -2 -3	2

. To Combine – - . To Trim – - To Correct - - . To Build - -		3
: Cut – - :Dissolve - - : Effect - - : Fade – - : Wipe – -		4

<p style="text-align: center;">: Linear – -1</p> <p style="text-align: center;">: Non linear – -2 liars</p>		5
<p style="text-align: center;">: -1</p> <p style="text-align: center;">: -2</p> <p style="text-align: center;">: -3</p> <p style="text-align: center;">: -4</p>		6

- :

- 3

		1
		2
		3

- :

- 4

- - -		1
- - -		2
- - -		3
- -		4

-:

- 5

-1

-2

-3

-4

-5

-6

-7

-8

-9

-10

)Time Code T.C(

-11

.) (



- :

- 6

			1

	-1			2
	-2			
	-3			
	-4			
	-5			
	-6		-1	
	-7			
	-8			
)W.F.(	-9		-2	
)T.B.(	-10			
	-6	-	-3	
	-7			
	-8			
	-9			

	-1		-1	3
	-2		-2	
			-3	
	-3			
<b>Play</b>	-4		-4	
	-5			
			-5	
	-6			
			-6	
	-7			
			-7	
	-8			
	-9		-8	
			-9	
	-10			
			-10	
	-11			
			-11	
	-12			
			-12	

			1
			2
			3
			4
			5
			6
			7
			8
			9
			10

Cut		13	Record Mach		1
Mix		14	Play Mach		2
Effects		15	Mixer		3
Fade: Out + In		16	Switcher		4
Wipe		17	Wave Form		5
Head Room		18	T.B.C		6
Titles		19	R.C.E		7
Silhouette		20	Source		8
Matching		21	Back Ground		9
Full Cader		22	Fore Ground		10
Sound Effect		23	Editing Script		11

Video Tape	) (	24	Cue		12

- :

- 9

Montage	Mixage	Doublage	Trocage	
			Croma ( )System	
		) (	) (	

			<p>) Croma)</p> <p>:</p> <p>(</p> <p>)..</p> <p>:</p> <p>Background -</p> <p>Middle -</p> <p>ground</p>	
--	--	--	---------------------------------------------------------------------------------------------------------	--

Montage	Mixage	Doublage	Trocage
			<p style="text-align: right;">Foreground -</p> <p style="text-align: center;">Chroma key –</p> <p style="text-align: right;">)Croma)</p>







(10)



-;

-;

-1

.)

(

-  
-  
-  
-  
-  
-  
-

-: -2

: -3

) ( -1

-2

-3

-4

-5

-6

-7

-: -4

-1

Delay Time

1/4

-2

:

:-

-5

-1

-2

-3

-4

-5

(

.)

:-

-6

-1

-2

-3

-4

-5

-6

-:

-7

		1
		2
		3
		4

-:

-8

		1
		2
		3
		4
		5

	-:	-9
		-1
		-2
		-3
		-4
		-5
		-6
		-7
	-:	-10
. To Gather		-1
. To Select		-2
. To Write		-3
. Final Prepare		-4
	-:	-11
.) (		-1
.) (		-2
.		-3



-:

-12

- 1
- 2
- 3
- 4
- 5
- 6
- 7

.) (







(11)

- :	- 0
:Pre Production -	:
	-1
	-2
	-3
	-4
	-5
: Set Up -	:
	-1
	-2
	-3
	-4
	-5
	-6
	-7
:Production -	:
) 3 2 1(	-1
	-2

editing - :

-1

-2

-3

-4

-2

-:

:

-1

-2

+

-3

-:)

(

-3

-:

-1

-2

-3

-4

-5

-6

-7

- :

- 4

- :

:

:

:

:

:

:

:

.....

.....

.....

-: -5

) - - (

VHS CD

( )

-: -6

)1(

)1(

/ / :

:

									.1
									.2
									.3
									1.
									.2
									.3
									1.
									.2
									1.
									.2
									.3
									1.
									.2
									.1
									.2
									.1
									.2
				) (					


			1
			2
			3
			4
			5
			6
			7
			8
			9
			10
			11
			12



			13
			14
			15
			16
			17
			18
			19
			20

(12)

-:

-:

-

			1
			2
			3
			4

			5
) Logo)			6
			7
			8
	+ +		9
			10

		-:	
:			-1
:			-2
:			-3
		-:	-
		-:	-
-:			-1
			-2
			-3
			-4
			-5
			-6
			-7



(13)

) ÷ (-1

÷

-2

÷

-3

-1

-2

-3

-4

-5

-6

-7

-8

-9

-10

-11

-12

-13

-4

-5

		1
		2
		3
		4



## U.H.F.

-:

)	1985 (	1
)	1988 (	2
	1990	3
)	1994 (	4
)	1994 (	5
	1996 ( )	6

(14)

-:

-:

- 1-Windows media player
- 2-Real player
- 3-Internet explorer
- 4-Win Amp
- 5-Win FM
- 6-LIVE 365
- 7- Find the station occasion

-:

E- Mail

Pro- Mail

Post – message

Telenet

H.T.T.P

Usenet

Radio – Net

I.T.V

-: I.T.V

-:Enhanced T.V .1

-:Individualized T.V .2

) V.C.R ) -:Personal T.V .3

-:On- Demand T.V .4

-: .5

-: .6

-: .7

-: .8

## Radio-Net

(

) Streaming Sound

288(

W. Real Player)

(

)  
) Media  
)

(15)

-: :

**Fiber Optic**

-: :

-:

) 1000(

/ 300000(

) 20000(

) 20(

) 25( ) 625 ( -:  
 : **Frame**  
 .) × 25 × ×625 (

-: :

	<b>L.F.</b>		1
	<b>M.F.</b>		2
	<b>H.F.</b>		3
<b>U.H.F.</b>	<b>V.H.F.</b>		4
<b>E.H.F.</b>	<b>S.H.F.</b>		5

-: :

**H.D.T.V.**

:

-:

National Television Systems Committee	N.T.S.C	1
Phase Alternation Line	PAL	2
Sequential Color With Memory	CECAM	3
	4.3	4

-:

Open T.V.		1
Bay T.V.	) (	2
Cable T.V.		3
Interactive T.V.		4
On order T.V.		5

-:

- 1
- 2
- 3

-:

- 1
- 2

Microwave



	-3
Transponder	-4
up link	-5
	-6
down link	
spot antenna	-7
T.V. receive only	-8

E.H.F.

V.H.F.

A.M.

F.M.

- 1
- 2
- 3
- 4
- 5
- 6
- 7
- 8
- 9
- 10

) Digital( ) Analog)  
 -:

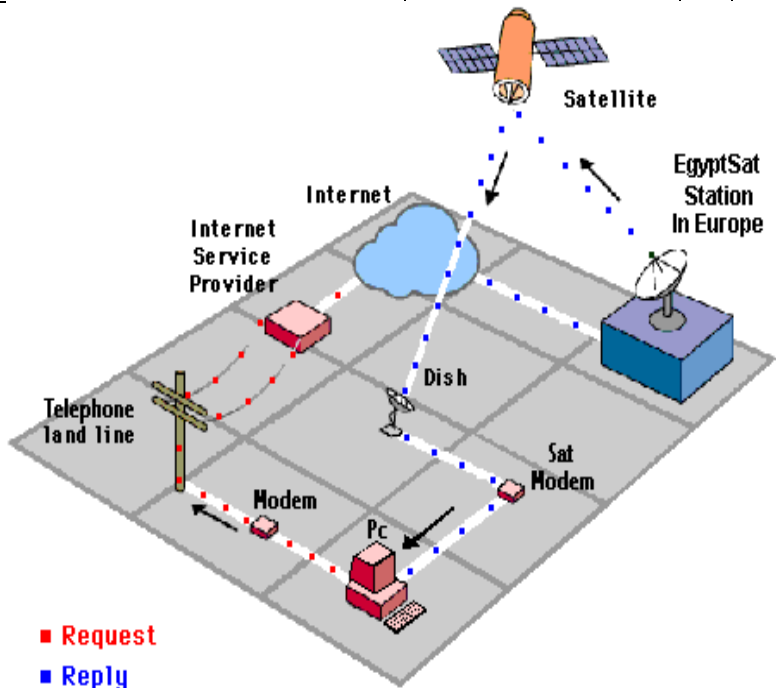
	<b>S.N.G. Satellite News Gathering</b>	1
	<b>Server</b>	2
) (		3
<b>Relay Station</b>		4
	<b>Fiber Optic</b>	5

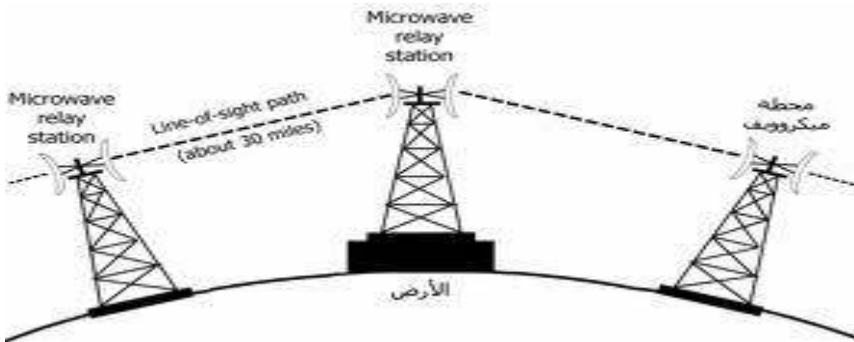
) 0-1

(

Digital System

6





( ) Ionosphere - ( )  
 ( ) Line OF – Sight  
 ( )

12

(

)

the

)

(

) Curvation of earth)

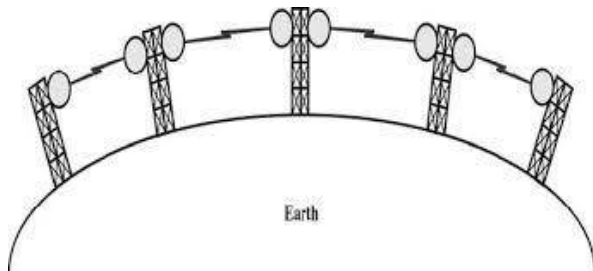
) Relay Stations)

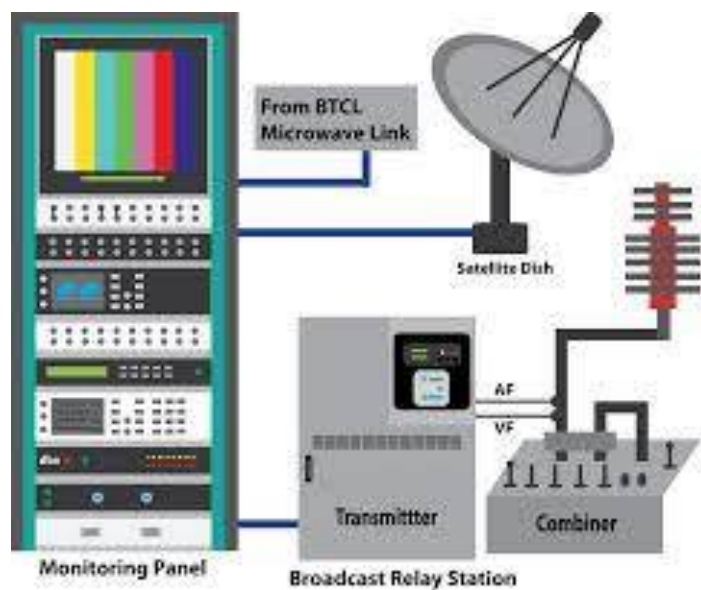
30- 20(

)

)

(







(16)

A	
Antenna	L.N.B. –
Analog	
American shot	
Audio	
B	
Backlight	
Background	
Back Projection	
Boom	–



C	
Camera control unit	
Camera Pedestal	
Camera man	
Control script	
Couple charge device	
Chroma Key	
Control room	
Crane	
Close up shot	
Cut	
Cue	
Caption	
Contrast	
D	
Digital	
Dish	
Decibel watts (D.B.W)	
(DAT) Digital audio tape	

De focus	
Digitize	
Dolly	
Down link	
Dolby	
Dissolve	
Documentary film - program	
<b>E</b>	
Electronic field broadcasting	
Electronic news gathering	
Extreme long shot	
Establish shot	
Editing scripts	
Effects	
Echo	
<b>F</b>	

Foot print	
Fiber optic cable	
Focus	
Fade (in + out)	
Full cader	
Face shot	
Floor manager	
<b>H</b>	
High definition camera (H.D.C.)	
Head room	
High angle	
Hard light	
<b>I</b>	
In focus	
Insert shot	) (
<b>L</b>	
Light effects	
Lip Sync	
Loud speakers	
)L.S.( Long shot	
Low angle	

Linear editing	
Lens	
Low noise bloke (L.N.B.)	
<b>M</b>	
Master control room (M.C.R)	
Monitor	
Montage	
Medium shot	
Mono	
Mix	
Mixer	
Matching	
<b>N</b>	
Non leaner editing	
National television system committee (N.T.S.C)	
Noise	
News story	
News bar	
<b>O</b>	

One direction mic	
Omi direction mic	
Over shoulder	
Out of focus	
Outside broadcast	
<b>P</b>	
Profile shot	
Play machine	
Panoramic shot	
Pedestal	—
Preview	
<b>R</b>	
Receiver	
Reaction shot running shot	
Radio frequency	
Reel	
Remote control unit	
Resolution	
Reverb	—
R.G.B Red Green Blue	
Round table	

discussion (R.T.D)	
Report	
<b>S</b>	
Still cadre shot	
Sound effects	
Special effects	
Stand by	
Stock shot	
Story board	
Steadicam	
Switcher	
Sync	
Soft light	
Stereo 2 audio channel	
Source	
Silhouette	
Sound broadcast	
Script	
Slow motion	
<b>T</b>	
Troicar	

Titles	
Telecyine	
Time base corrector (T.B.C.)	
Two direction mic	
Traveling shot	
Time code	
Treatment	
Tripod	
Truck or track	
<b>W</b>	
White balance	
Wide angle	
Wipe	
Wireless mike	
Wave form	
<b>V</b>	
Video tape recorder	
Viewfinder	
Very close shot	
<b>U</b>	
Up link	

(17)

:	.1
:	.2
.1994	.3
	.4
	.5
	.6
	.7
	.8
	.9
	.11
	.11
	.12
	.13



.14  
.15  
.16  
.17  
.18  
.19  
.21  
.21  
.22  
.23  
.24  
.25  
.26  
.27  
.28  
.29  
.31  
.31

3