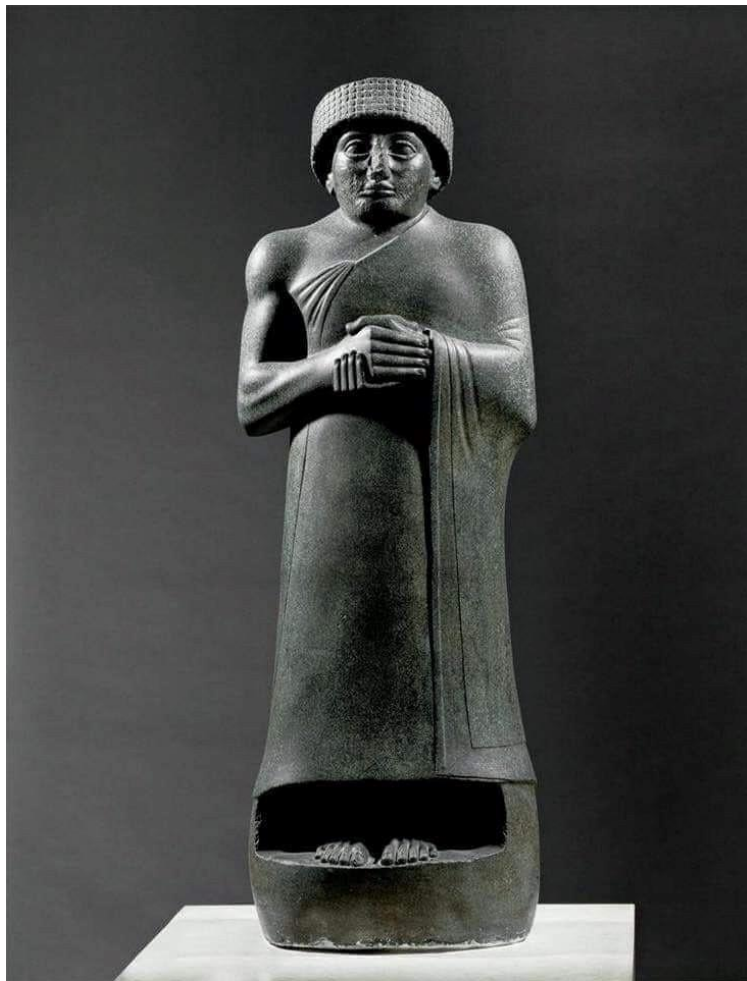


The golden triangle of the dogs in the Hunter constellation

Written by Azad Karimi



Gautan or Gudea or Zandaqa, a Gutu ruler in Mesopotamia

This article is being published for the first time. My goal is enlightenment. I want justice to be done. My mission is to reveal the truth with my writings, and expose the lies, and tell the people of the world the secrets that need to be revealed to fight for the truth.

I say again if I don't publish this content, I will be destroyed by God the Creator, so I am not afraid of human threats....I found the photo by accident on the internet.

What a beautiful Idea!

Especially, the color of the dome and the flag of Israel and the tiling of the walls of the temple of Izad Anu are the same. sky blue. The Muslim mosque has a minaret and this one does not.

Why?

The wine cup of the Izad Alalus is octagonal, and it is the pool of the Izad Haana(Estar), who is the Izad Anu, the winemaker(Magi or Maywan) of it, and he takes care of it.

This city is the brother of Harran and Saqez because it is located in the Orion and Big Dog and Small Dog in Hunter sign.

Jerusalem in Orion-Hunter, Saqez in Big Dag, and Harran in Small Dog.

Aruna or Barzaan is the upper hand of the dog and Haraan or Bardaan is the lower hand of the dog. This dog is standing on an octagonal stone pile or Bushtu or Bustu. That mass of stone is the current location of Al-Aqsa Mosque and the star of Sirius corresponds to it in Jerusalem.

For this reason, the name of this place is Bushtu or Busti, which means base or Sang-busti. Sang is stone. In the ancient Hebrew texts, they were called Ga-Busti, Yebusti, Yebusi or Jebusi. The last king of the Jebusites is called Aruna.

The tongue of the Dog is located under the tip of the sword and drinks from the blood of the cow or the water of the fountain of life.

It means Shurishu, Aruna, and Sirius, which means the leopard of Izad Enki, the tiger of Izad Marduk, and the lion of Izad Haana. This is the iron blade of Sushiant's sword of justice. Its handle is Tushpa(Wan city) or bitter water in the constellation of the cow and that cow belongs to the wise man Izad Ardini(Ashnu). The place where the blade of the sword joins the hilt is the hilt, and it is the cat of God Enlil.

Sirius is at the tip of the sword, and the tip of the sword is the base of the scales of Justice. Aruna is the lightning of the sword and it is in its blade and Shurishu is its sharp edge.

The constant and uninterrupted rotation of the scales of Sushyant is the power of the fiery smoke of the god Ashnu, who is in the charioteer constellation and it is Kardunia or Charduri.

The tip of the sword, which is Sirius, is the base of Haana's sword, and it is located on the Gautar or water of life. This pond is located under the feet of Izad Enki. Gautar or cow forms an octagon in a sitting position.

Gautar was in the form of a stone mountain. Its brain had a black stone, and spring water was boiling from it. This stone was called Khareta or Khaara and it was the source of knowledge.

The followers of the Anunnaki Izads who are Kurdish people's ancestors were skilled in stone carving.

They were called Gautari or Gautani. They considered their knowledge to be derived from this Khrata, Hrata, Atra,Arta or black stone and were nicknamed Sangiwa.

Sangi-Wa or Shagiga is the name the Sumerians gave themselves.

Therefore, the story of the ascension of Muhammad, the Prophet of Islam, from the Dome of the Rock of the Al-Aqsa Mosque is quite intelligently designed and belongs to the logic of the formation of the city of Jerusalem based on the science of ancient astronomy.

Something called the ownership of Muslim Arabs and Muslims over this city is completely political. It is a lie and it goes back to the logic of domination.

The stone masons or Sangibuts of ancient Kurdistan built other cities such as Mecca or Pakka, or Kabba, Medina or Atrupa, Hagar, and Hetra. They have built 90 famous cities of the ancient world. Wherever you see an ancient stone monument, it belongs to these people. Because they are the fathers of the current people of the Middle East.

I thought that it might be difficult for people to understand this content, so I decided to simplify this content and say that in the myth of Mardukh and the white sacrificial cow, we see a white dog with a golden collar and is standing on a stone has placed both hands on the cow's neck and is drinking the blood of the cow. This cow was sacrificed by Mardukh with a knife. If we consider the dog's golden collar as the hunter's constellation, all the constellations around him form the same dog: Gemini (constellation), Taurus (constellation), Eridanus (constellation), Lepus (constellation), Monoceros (constellation).